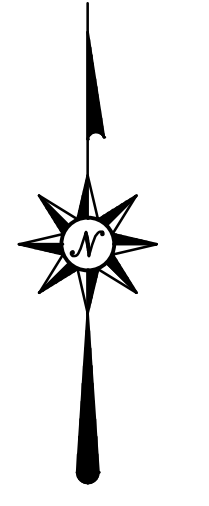
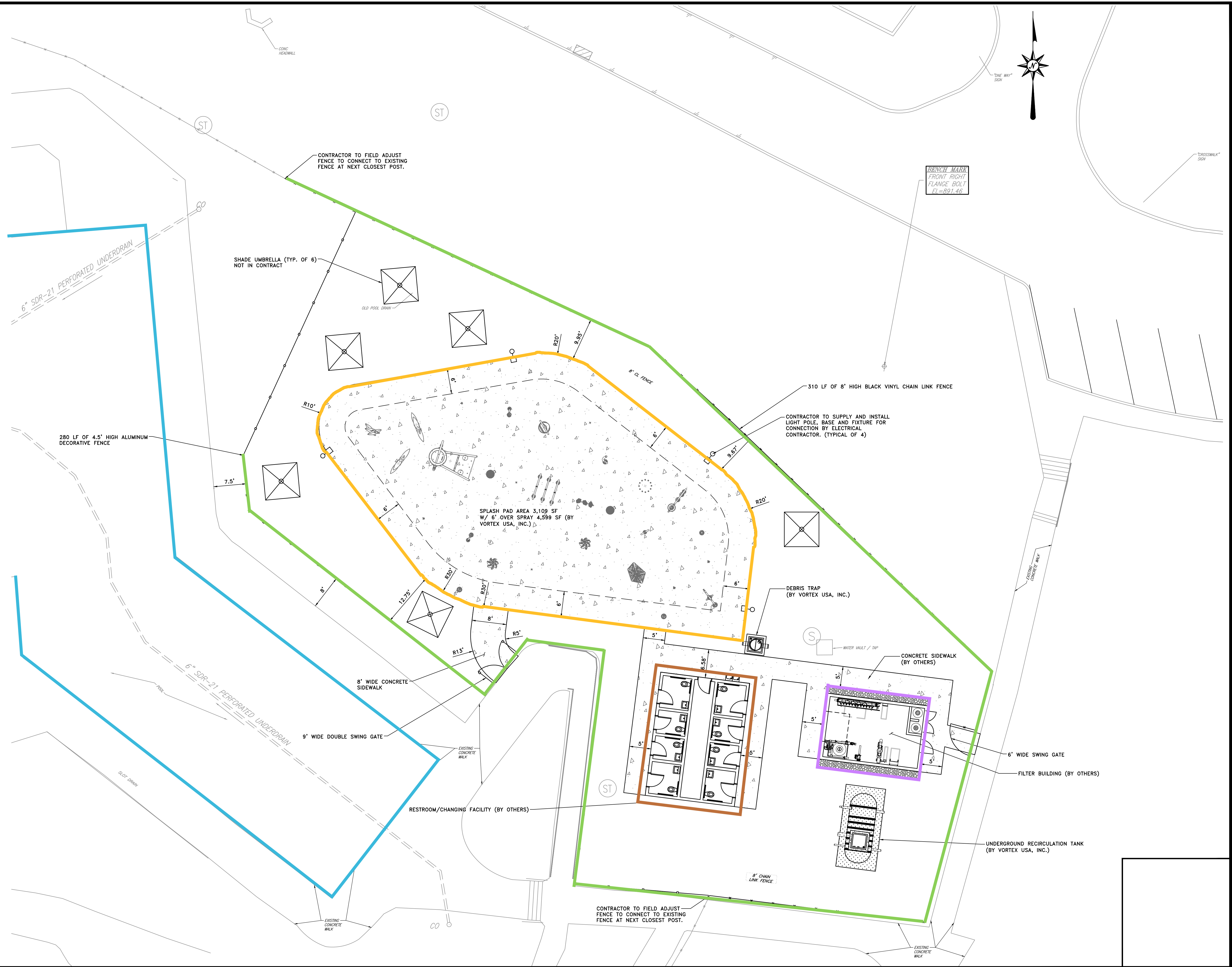


**Site Notes:**

- Notify the Pennsylvania One Call System at (811) a minimum of (5) days prior to any demolition, excavation, or construction. All existing subsurface utility information presented on the contract drawings is characterized as utility quality level C or D per "CLASCE 38-02 - Standard Guidelines for the Collection and Depiction of Existing Subsurface Utility Data" unless specifically noted otherwise.
- All work and materials to comply with all specifications provided and to all local, county, state, and federal regulations and codes; and O.S.H.A. Standards.
- Implement and maintain a work zone traffic control plan in accordance with PennDOT publication 213 ("Work Zone Traffic Control") for work in or adjacent to vehicular traffic areas.
- Designate and maintain on-site a trained competent person for all excavation work who shall be on call 24-hours-per-day-7-days-per-week in case of emergency. Provide 24-hour contact information for the trained competent person prior to any work.
- Maintain areas outside the work area and traveled ways within the work area in a condition usable by the public. Keep areas clean and free of mud or dust and repair/patch vehicular and pedestrian travel ways as required to maintain access.
- Obtain all required local, state, or federal permits necessary for construction from governing agencies including submission of applications and payment of associated fees, including permits for borrow or waste sites.
- Provide paving materials in accordance with PennDOT Publication 408 and PennDOT Standard Details (Pub. 72) as amended.
- Remove and dispose of all rubbish, trash, debris, and organic material in a lawful manner. Burning of material onsite is not permitted.
- All signage to be installed in accordance with the Manual on Uniform Traffic Control Devices, latest edition.
- Site Contractor to coordinate work with Vortex USA, Inc., Contact Mike McGilbra-(330) 842-0133. Vortex USA, Inc. Responsible for installation of concrete splashpad, amenities, water containment facility, debris trap and piping associated with the function of the splashpad.



Drawn By	Checked By	Approved By	No.	Date	Description	By	No.	Date	Description	By	No.	Date	Description

**LSSE**  
Civil Engineers and Surveyors  
846 4th Avenue  
Coraopolis, Pennsylvania 15108  
Phone: 412-264-4400  
Fax: 412-264-1200  
email: info@lsse.com

File Name: 175192sp.dwg  
Date: June 2022

Scott Township  
301 Lindsay Road  
Carnegie, Pennsylvania 15106

Scott Park Splash Pad Site Improvements  
Contract No. 22-PK2  
Situated In  
Scott Township, Allegheny County, Pennsylvania

Sheet Title	Sheet No.
Site Plan	2 of 10